

HIP SURVEILLANCE IN CEREBRAL PALSY

DEVELOPING A CARE PATHWAY

AT HOLLAND BLOORVIEW KIDS REHABILITATION HOSPITAL, TORONTO, CANADA

Anne Kawamura MD^{1,2}, Angie Ip MDCM³, Chun Kim BSc PT¹, Peggy Curtis RN¹, Shauna Kingsnorth PhD^{1,2}, Darcy Fehlings MSc MD^{1,2}

¹Holland Bloorview Kids Rehabilitation Hospital, Toronto, ON

²Bloorview Research Institute, Toronto, ON, ³University of British Columbia, Vancouver, BC



Why is hip surveillance important in cerebral palsy (CP)?

- Hip subluxation is common and can progress to hip dislocation
- Both subluxation and dislocation can cause:
 - Pain
 - Disturbance in gait
 - Seating difficulties
 - Caregiving challenges
- Impact on quality of life
- Implementing hip surveillance can decrease incidence of hip dislocation in children with CP

Methods



- Chart Audit (n=150)
- Local practices for hip surveillance
- Interviews (n=9)
- Clinicians' approaches and learning needs

- Multidisciplinary team
- Education workshops
- Time to implement pathway (3 months)

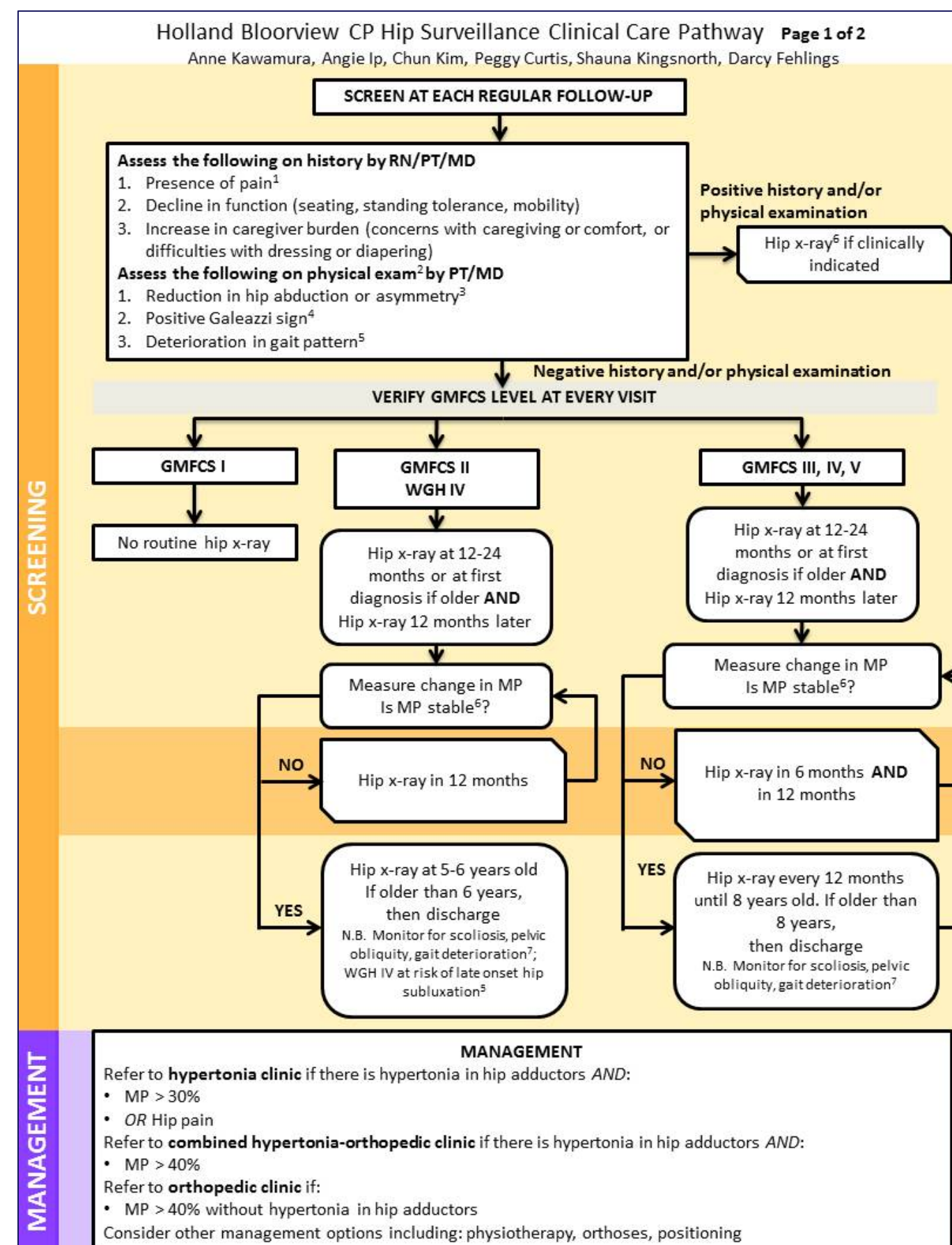
- Chart Audit (n=150)
- To determine whether practice followed care pathway
- Interviews (n=9)
- Usability
- Modifications
- Educational needs

Contact Information:

Anne Kawamura, MD, FRCPC
akawamura@hollandbloorview.ca

What is a care pathway?

Care pathways are *structured, multidisciplinary, and collaborative* algorithms that reflect **local context** and support the implementation of **guidelines and evidence informed** best practice



Results

Before Implementation

After Implementation

86%

95%

Of children with CP seen at Holland Bloorview had hip surveillance that was consistent with care pathway

33%

100%

Of clinicians at Holland Bloorview followed an evidence informed guideline or care pathway



Ongoing education

- Increase visibility of care pathway (Posters, laminated cards)
- Web-based resources (downloadable format, videos)



Changes to practice

- Earlier initial hip x-ray
- Fewer x-rays
- Increased referrals to orthopedics/hypertonia clinic
- Awareness of Winters Gage and Hicks type IV gait